



**HOLMAN**

Lighting Guide





# CONTENTS



## INTRODUCTION

- 04 The Company
- 06 Why Choose Holman Garden Lights
- 10 Design Considerations

## LIGHTING TECHNIQUES

- 16 Uplighting
- 18 Silhouetting
- 20 Path Lighting
- 22 Shadowing
- 24 Wall Washing
- 26 Deck Lighting
- 28 Pond Lighting

## LIGHTING RANGE

- 32 Spotlights
- 34 Deck Lights
- 36 Path Lights
- 37 Pond Lights

## GARDEN LIGHTING INSTALLATION

- 44 Installing Your Garden Lights
- 48 Installing Deck Lights
- 50 Video Installation Guide

## PRODUCT GUIDE

- 52 Pricing & Product Codes

**Perth Warehouse & Head Office**  
11 Walters Drive  
Osborne Park, Western Australia 6017

📞 08 9416 9999  
✉ info@holmanindustries.com.au

**Melbourne Office & Warehouse**  
145 Northcorp Boulevard  
Broadmeadows, Victoria 3047

📞 03 8335 4444  
✉ melbourne@holmanindustries.com.au







43mm Garden Spotlight

# THE COMPANY

**H**olman proudly manufacture a range of high-quality 12V LED garden lighting solutions to beautify residential and commercial landscapes. As an Australian family owned company, we are passionate about designing innovative products that enhance the time we spend with friends and loved ones in our backyards and gardens

Outdoor lighting creates ambience, while showcasing the unique character, aesthetics and landscaping of a home. The best outdoor lighting designs stretch the

boundaries of spatial perception making gardens and outdoor dining spaces feel expansive. Strategically placed lights add mood and atmosphere to entertaining areas, while also increasing the safety and security of our homes.

The Holman Bluetooth® controlled Garden Lighting range consists of durable path lights, deck lights, spotlights and pond lights. The patented SAFE-T Plug + Socket system makes installing and expanding the setup an easy, modular process without the need for an electrician. Holman LIGHTSOURCE Controllers are

the heart of the system, designed for easy DIY set up and automatic operation through iGardener or the new Holman Home app.

We hope this guide helps you understand how the Holman Garden Light system works, informs your unique design considerations and inspires you with different lighting techniques before embarking on your own garden lighting project. If you have any further questions our customer service team is available to answer any questions by phone, email or any of our online channels.





# WHY CHOOSE HOLMAN GARDEN LIGHTS

## RESEARCH & DEVELOPMENT

Through thoughtful design and years of research and development we have chosen materials to suit the harsh and ever-changing conditions of the Australian and New Zealand outdoors. Hard wearing weatherproof housing features across the full range of light fixtures and Bluetooth Controllers. This ensures your lighting system and controller box will not be compromised by rain, reticulation or harsh summer sun. The Plug + Socket cabling system guarantees a waterproof seal on all cabling, which can be neatly buried under soil, pavers or mulch.

## SMARTPHONE CONTROLLED

The free and easy to use Holman iGardener app provides a host of programming options for the Garden Lights. The app talks to our Bluetooth® Controllers, which connect to the cable system of the lights. Choose the perfect brightness, colour (for RGB Colour systems) set on and off times and program multiple Garden Light Controllers via the app. For simple lighting systems where Bluetooth® is not required, we have Manual Light Controllers which are easily operated by a power switch.

## COST EFFECTIVE & ENVIRONMENTALLY FRIENDLY TO RUN

The Holman Garden Light range operates on a low voltage system, so you can enjoy the benefits of outdoor lighting without worrying about the environmental impact or your electricity bill. In comparison to older outdoor lighting systems, it also means you can connect many more lights to a single controller, lowering the overall cost of your project.

*Note: The Holman Garden Lighting system cannot be used with any other lighting transformers*

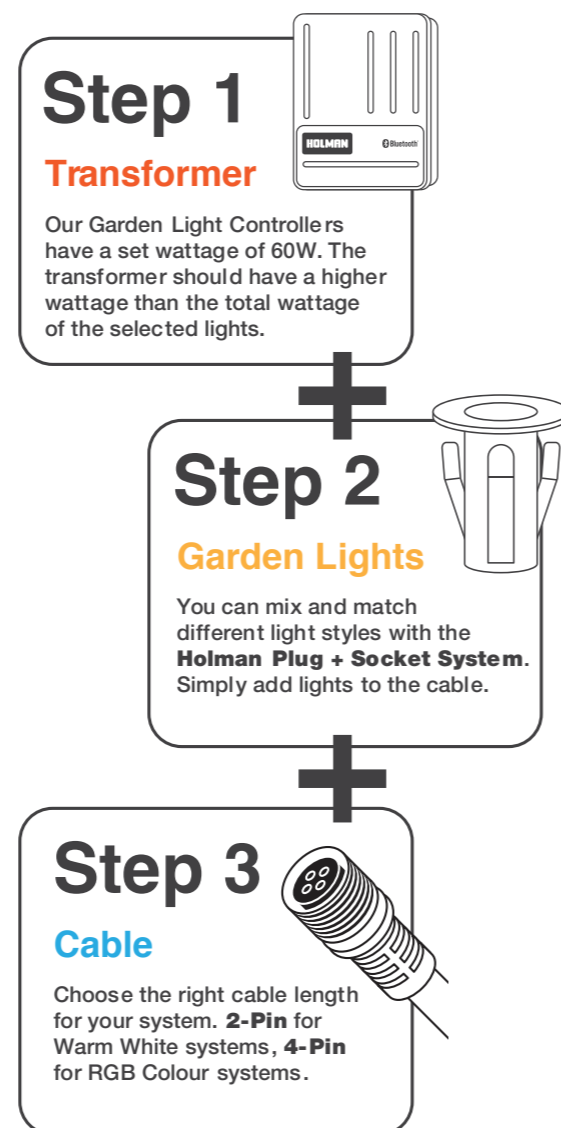




## SIMPLE DIY INSTALLATION PERFECT FOR HOMEOWNERS, LANDSCAPERS OR CONTRACTORS

Holman Garden Lights are quick and easy to install regardless of your experience with outdoor lights. Simply mount your LIGHTSOURCE controller away from the elements, place lighting fixtures in their planned position and connect to a controller using mainline cables. Mainline cables are available in various lengths for both the 2-pin Warm White and 4-pin RGB systems making future expansion easy.

*Note: The 2-pin Warm White and 4-pin RGB systems are NOT compatible with each other as they run from separate controllers.*



*“Enjoy the benefits of outdoor lighting without worrying about the environmental impact or your electricity bill”*

**TIP**

250mm Path Light  
PLRGB2503



# DESIGN CONSIDERATIONS

**G**arden lighting designs can range from simple and practical to spectacular and theatrical depending on the style of your garden, its size and needs. You should always sketch an outdoor lighting plan before installing garden lights, noting the key architectural and landscape features you wish to highlight. Your outdoor lighting plan should acknowledge the following design considerations:

## NOTE THE FEATURES YOU WANT TO ACCENTUATE PRIOR TO PLANNING YOUR LIGHTING DESIGN AND BUILD YOUR PLAN AROUND THEM.

Think about which elements of your home and garden you want viewers to focus on. Do you have water features such as a pond, fountain or pool? What colour do you want to stand out? Which walkways require illumination? What colour scheme will work for your home?

**PLAN YOUR LIGHTING FROM APPROPRIATE VIEWING POINTS.** When planning your landscape lighting design, get some perspective from common viewing points. These could include the kitchen window, bedroom, the driveway – or a combination! Be sure to avoid fixtures pointing directly into windows or creating unnecessary glare.

**LIGHT KEY FEATURES AND AREAS, NOT EMPTY SPACES.** Light isn't effective until it hits a surface so it's important to understand how the different lighting techniques discussed later in this book can apply to your garden. Even the most neglected outdoor spaces can transform with the right lighting design.

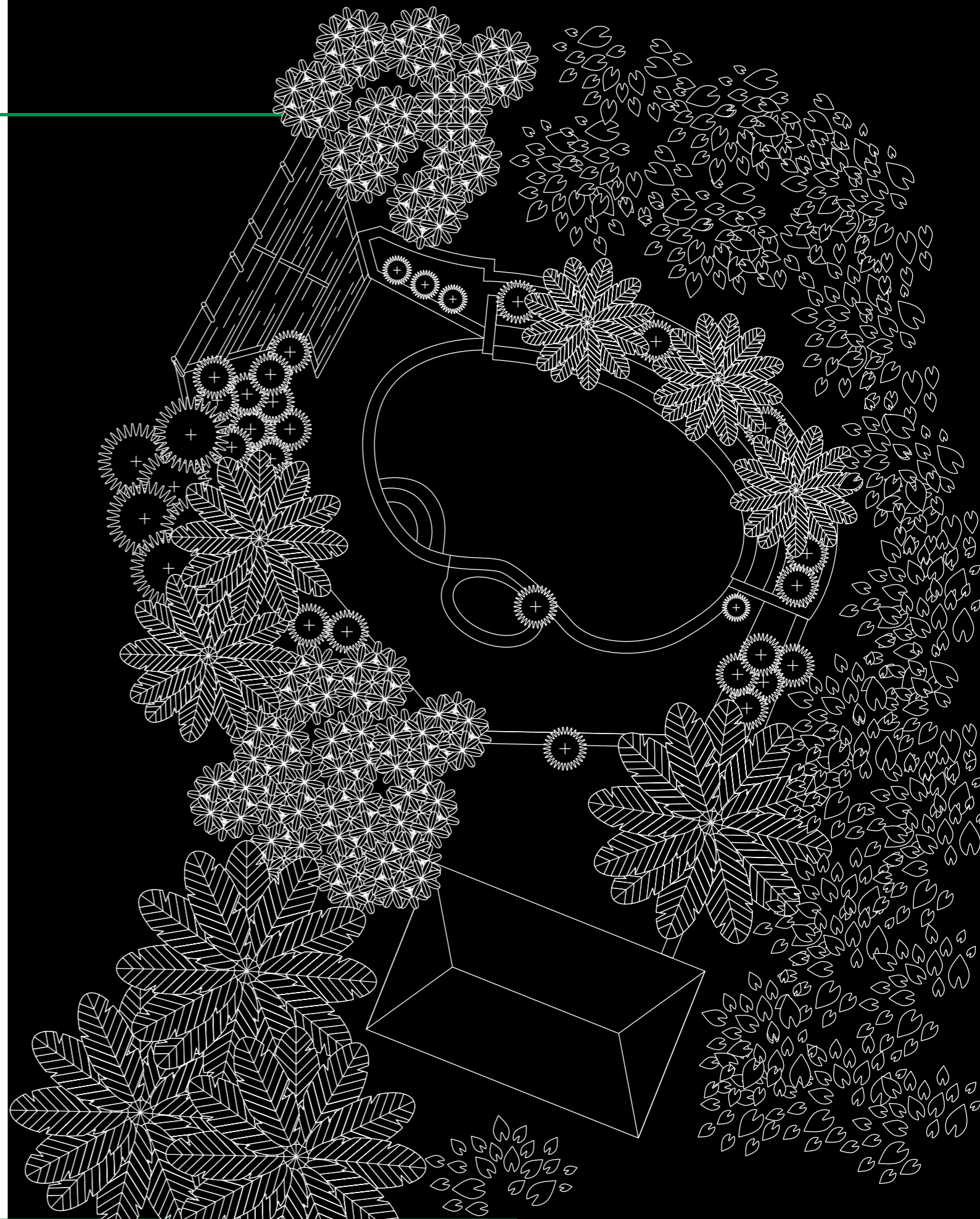
**DON'T OVER LIGHT.** There is nothing worse than an over lit restaurant to bring down the overall vibe and experience of your meal. Well, the same can be said for garden lighting. The key elements of your garden, outdoor entertainment

space, façade and street view should work in cohesion rather than compete with one another. Effective garden lighting designs bring symmetry and balance to your home.

**MAKE SURE TO CONSIDER CONTRAST.** Find the right balance between light and dark, sometimes less is more. Dark spaces contrast the light while shadows create added depth.

**PAY SPECIAL ATTENTION TO YOUR ENTERTAINMENT SPACES.** Position your lights to deliver soft lighting across the area families and guests gather, such as the BBQ or dining area.

**CHOOSE A LOW WATTAGE LIGHT.** Holman low wattage lighting range uses transformers, LIGHTSOURCE Controllers, to reduce power from the 240V electricity supplied to your home to a safe 12V. This makes installation safer, easier and more economical than ever!





# LIGHTING TECHNIQUES

**T**he Holman range of Garden Lights can be used to achieve a range of techniques that enhance the visual appeal, safety, space, mood and flow of your home and garden.







## UPLIGHTING

Enhance your garden's focal points by illuminating key structural features and plants. Highlight significant trees and water features by positioning lights upwards towards key garden elements. Place spotlights 15-20cm away

from the object being illuminated and position the fixture upwards on a 45-degree angle. Use 75mm or 100mm spotlights to uplight larger fixtures, and the smaller spotlights to add depth within plant foliage and line garden beds.

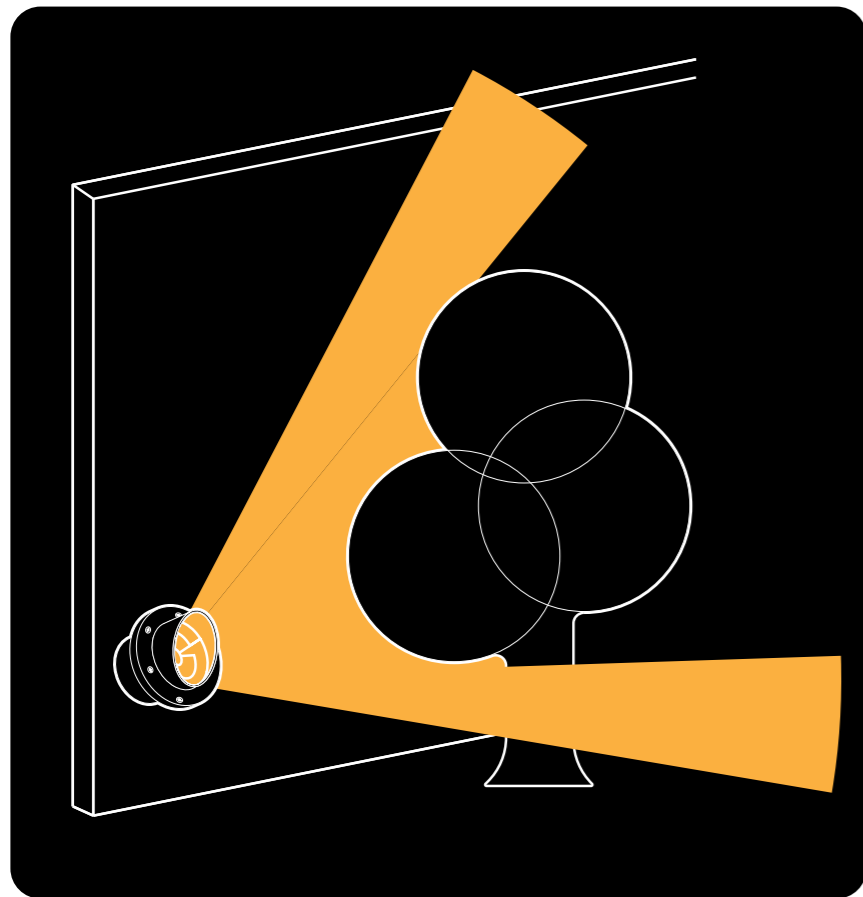


---

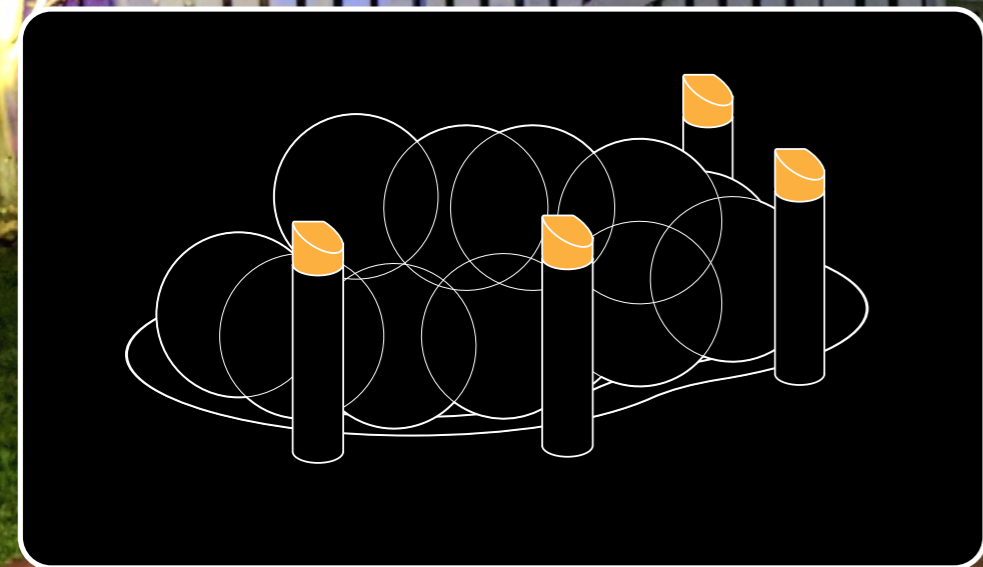
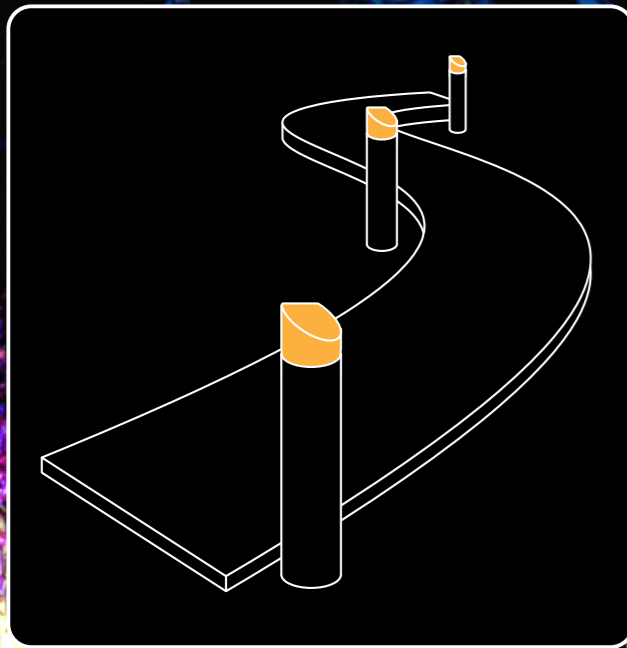
## SILHOUETTING

Also known as backlighting, silhouetting is used to dramatize a distinctive object or feature to create a mysterious and compelling effect. This technique is best used to objects and plants with

distinctive or unique shapes. Use spotlights to illuminate a surface that can act as a backdrop to dense plant material.







## PATH LIGHTING

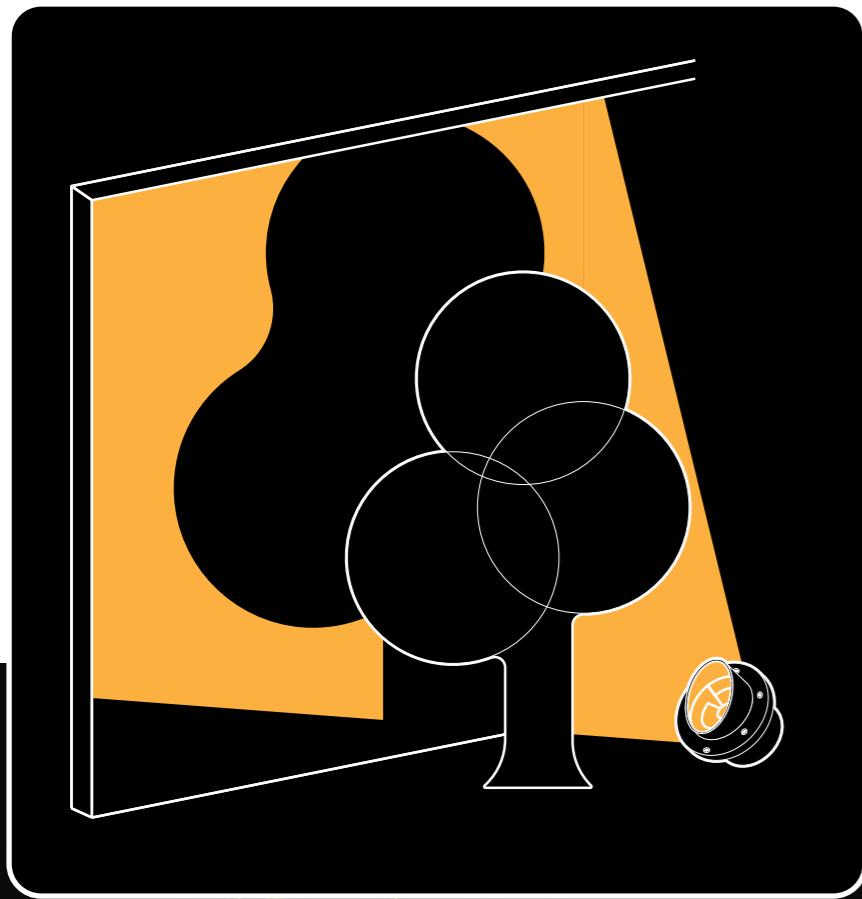
Create a continuous stream of soft light along walkways and driveways to increase the safety and security of a home. Path lights should be low to the ground, non-glaring and strategically positioned to create elegant lines and contours in your garden. Utilise path lights along

walkways to create a statement entrance or illuminate the key features of your home.

Space and position fixtures to provide visually appealing illumination along key paths and walkways. Avoid over lighting or

runway style illumination, it feels unnatural and is aesthetically pleasing.





## SHADOWING

Used to project the look of an object, such as a tree or shrub onto an adjacent surface. This technique is ideal for trees that have open, delicate foliage. Shadowing adds drama to any landscape, lighting the object from ground

level and angling upward creates a larger-than-life effect. If using plant material to achieve this effect, plants will need to be periodically trimmed and spotlights may need to be relocated to compensate for natural growth. If using plant

material to achieve this effect, plants will need to be periodically trimmed and spotlights may need to be relocated to compensate for natural growth.

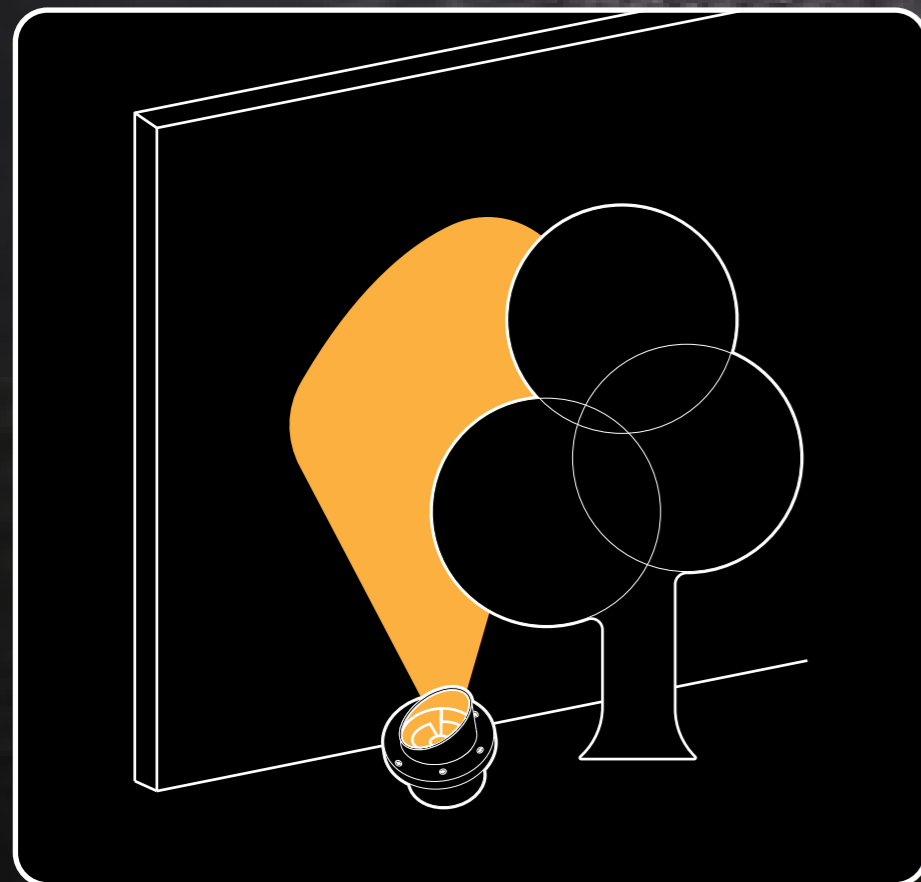




## WALL WASHING

Ideal for achieving efficient and unobtrusive security lighting. Carefully spaced, concealed lights create a soft, subtle effect changing a garden's mood from day into night. Point spotlights towards highly reflective surfaces like painted walls so the maximum amount of light is disbursed.

This technique can be particularly interesting for walls surrounding pools or illuminating walkways down the side of a home. Use 43mm spotlights approximately 10cm from any wall positioning the fixture upwards until you've achieved your preferred look.



**TIP**

*Take care to avoid uncomfortable glare from incorrectly positioned lights, particularly around dining areas. Lights should always point upwards at a 45-degree angle away from eye level.*



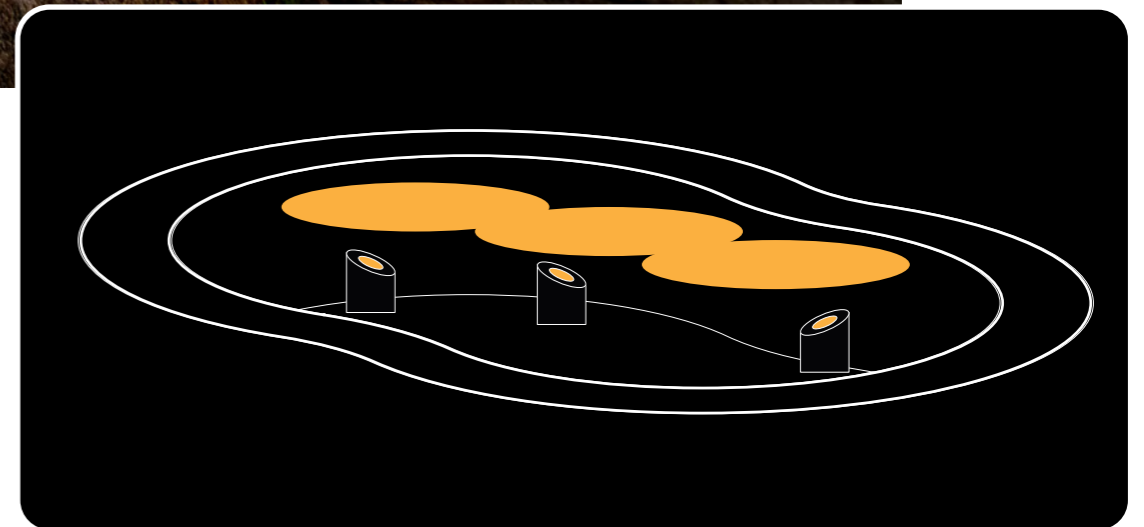


---

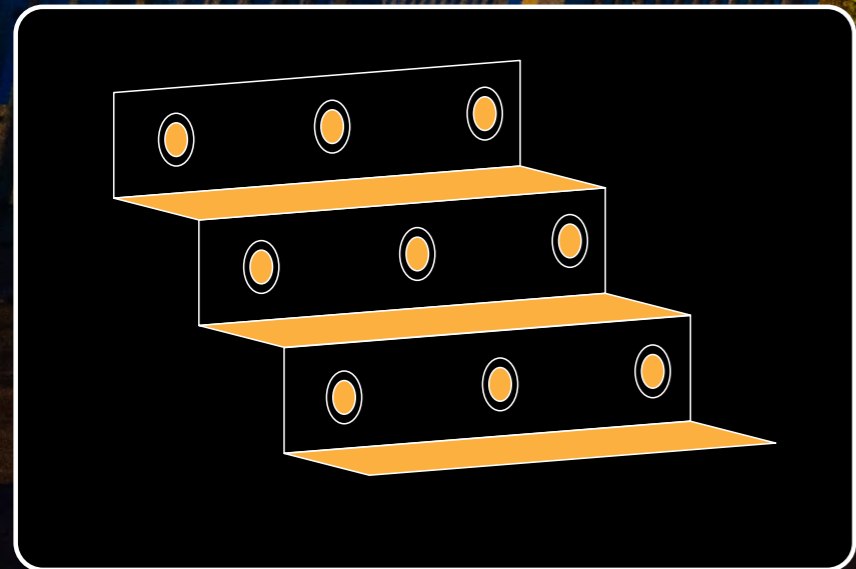
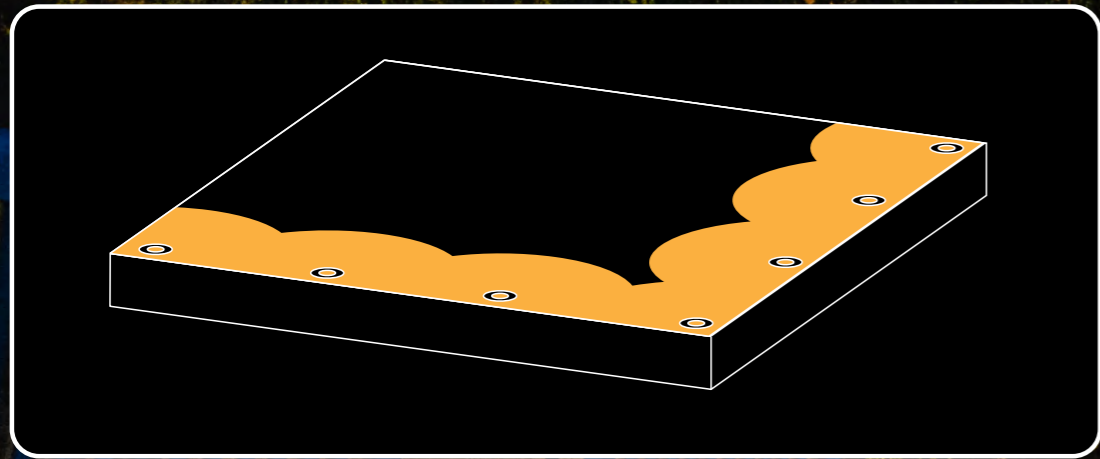
## POND LIGHTING

Create stunning reflections and add depth to your water feature at night by using Pond Lights. Secure a line of submersible lights to the base of the feature, or hide them under rocks and aquatic plants if you have a pond. To highlight key features such as waterfalls,

point the light facing upwards toward the feature. To create reflections on the surface of the water, place the lights along the edges of the pond facing inwards. Pond lights will also help prevent unwanted predators attacking fish.







## DECK LIGHTING

Deck lights are perfect for creating unobtrusive illumination to stairways, pathways, entertainment decks and even dance floors. By increasing the visibility of walkways, deck lights are the ideal fixture for added safety and security around the home. Holman

manufacture a range of 30mm and 45mm deck lights in both warm white and RGB colour. Ideal for illuminating larger areas and entertainment spaces. Deck lights provide unobtrusive lighting for patios or stair cases.



# LIGHTING RANGE

**B**ring your outdoors to life with the range of smart lighting solutions from Holman. The possibilities are endless with our range of garden lights and accessories. Simply choose your colour scheme and preferred fixtures to get started.

43mm Garden Spotlight  
SLW433



# SPOTLIGHTS

**Spotlights** can be used to cast a strong beam of light directly onto an object, plant or tree bringing key features to life. The best designs

combine small and large spotlights to add depth and ambience to garden beds and dining areas, or line garden perimeters. Take care

to avoid uncomfortable glare from incorrectly positioned lights.



### Mini Spotlight

- 0.5W LED in RGB Colours and 1W in Warm White
- Available in RGB and Warm White
- Beam reach up to 1m



PSLW451 PSLRGB4505



### 43mm Spotlight

- 3W LED
- Available in RGB and Warm White
- Beam reach up to 3-4m



SLW433 SLRGB433



### 75mm Spotlight

- 6W LED
- Available in RGB and Warm White
- Beam reach up to 8-9m



SLW757 SLRGB756



### 100mm Spotlight

- 10W LED
- Available in RGB and Warm White
- Beam reach up to 12m



SLW10010 SLRGB10010



### 140mm Spotlight

- 15W LED
- Available in Warm White
- Suitable for lighting up large trees



SLW14015



140mm Garden Spotlight  
SLW14015



For how to install Deck Lights, check out page 50.

## DECK LIGHTS

Deck Lights are perfect for creating unobtrusive illumination to stairways, pathways, entertainment decks and even dance floors. By

increasing the visibility of walkways, deck lights are the ideal fixture for added safety and security around the home. Holman manufacture

a range of 30mm and 45mm deck lights in both warm white and RGB colour.



### 45mm Deck Light

- 1W in Warm White and 0.5W in RGB Colour per light
- Available in a 6 pack
- Suitable for lighting up decking stairs



DLW4510 DLRGB4505



### 30mm Deck Light

- 0.6W in Warm White and 0.3W in RGB Colour per light
- Available in a 6 pack
- Suitable for tight spaces as they create a softer light



DLW3006 DLRGB3003



### 18mm Deck Light

- 0.4W LED per light in Warm White
- Available in a 10 pack
- Suitable for steps and display shelves
- Space these lights closer together for a continuous ribbon of light



DLWW18K



# PATH LIGHTS

**Path Lights** are best used to light planting beds and pathways, while providing a seamless transition between lighting scenes. Holman manufacture Path

Lights in 250mm, 450mm and 550mm fixtures in Warm White and RGB colour.

# POND LIGHTS

**Pond Lights** are a great way to add depth and reflections to your water features. Not only do they highlight a focal point in your garden, they also increase safety so your guest

know exactly where it is located. Holman Pond Lights are completely submergible with a waterproof rating IP68, you can easily be connect to your Plug + Sockey

system with an included connection tee. Available in a pack of three lights.



### 250mm Path Light

- 3W LED
- Available in Warm White and RGB Colour
- Compact design suitable for garden beds



PLW2503 PLRGB2503



### 450mm Path Light

- 3W LED
- Available in Warm White and RGB Colour
- The sleek and minimal design makes for a simple yet effective way to dot light around your yard



PLW4503



### Pond Lights

- 1W in Warm White and 0.5W in RGB Colour per light
- Available in a 3 pack
- Plastic sealed with stainless steel housing



POLWW1K POLRGB1K



### 550mm Path Light

- 3W LED
- Available in Warm White and RGB Colour
- This tall unit will maximise light in your garden and brighten areas for safety.



PLW5503



450mm Garden Path Light  
PLW2503



# CONTROLLERS & TRANSFORMERS

The Holman LIGHTSOURCE Controllers and Transformers change the 240V house voltage to 12V, meaning it is safe to use and no electrician is required. Each Controller allows 60W of power to be used. The

waterproof plastic housing and simple Plug + Socket System is made to be mounted outdoors.

**12V<sub>DC</sub> DIY**  
SAFE INSTALL

CONTROL UP TO 60W OF GARDEN LIGHTS  
**LIGHTING HUB**

WATER + DUST PROTECTION RATING  
**IP54**



### Garden Light Controller RGB

- 4-Pin Plug + Socket
- Output 60W
- Weatherproof rating: IP54
- RGB Colour Controller

Pick the colour, create custom scenes and set on/off times from your smartphone.



### Garden Light Transformer Hub

- 2-Pin Plug + Socket
- Output 60W
- Weatherproof rating: IP54
- Warm White Transformer

This unit has no Bluetooth Control and must be turned off at the switch.



### Garden Light Wi-Fi Controller

- 4-Pin Plug + Socket
- Output 60W
- Weatherproof rating: IP54
- RGB Colour Transformer

Control the colour of your lights and create custom scenes from anywhere across the globe with our Wi-Fi Controller.



### Garden Light Controller

- 2-Pin Plug + Socket
- Output 60W
- Weatherproof rating: IP54
- Warm White Controller

Change the light intensity and set on/off times all from your smartphone.



App Controlled via  
CLXRGB60



# CABLES & CONNECTORS

2-Pin for Warm White systems, 4-Pin for RGB Colour systems. You **cannot** mix 2-Pin and 4-Pin systems together.

Holman have developed a unique Plug + Socket System to make installation completely DIY friendly with no electrician required. The 2-Pin System is for Warm White light and the 4-Pin System is for RGB

Colour, you cannot mix these systems together. All the cables are waterproof with an IP67 water resistance rating and can be buried under mulch or soil for a neat and tidy connection.



ALCW1

1m Extension Cable



ALCRGB1

2m Extension Cable



ALCW2



ALCRGB2



ALCW5

5m Extension Cable

ALCRGB5



ALCW3TL



ALCRGB3TL



ALCW3T



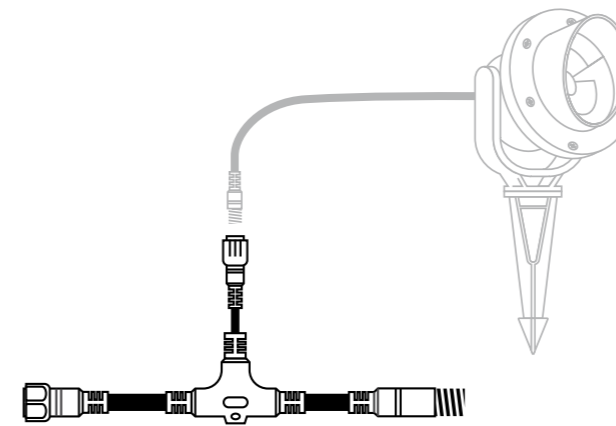
ALCRGB3T



ALCW10

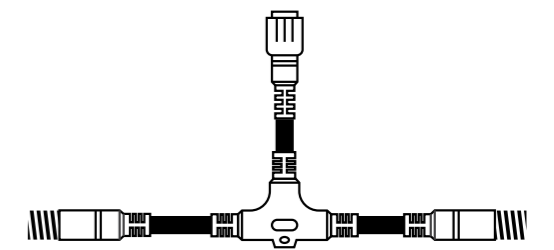
ALCRGB10

10m Extension Cable



### Connection Tee

- Connect lights to extension cables
- 2-Pin Connection for Warm White
- 4-Pin Plug + Socket Connection for RGB



### Expansion Tee

- Expand the mainline in two directions
- 2-Pin Connection for Warm White
- 4-Pin Plug + Socket Connection for RGB



# INSTALLING YOUR GARDEN LIGHTS

**W**e've compiled a general guide to assist with your garden light installation. The below instructions may need to be modified for the respective site and circumstances.



# 1.

## DRAW UP YOUR PLAN

You should always sketch an outdoor lighting plan before installing garden lights, noting the key architectural and landscape features you wish to highlight. Your plan should consider:

- An outline of the house, pathways, driveways, kerbs, garden beds and the types of fixtures best suited to each area.
- The size and position of focal elements such as trees, water features, structural designs
- How much space is needed between each light to create the desired effect.
- The location of power points or supply.



# 2.

## CHOOSE YOUR COLOUR SCHEME AND LIGHT FIXTURES

Choose between our range of 2-pin Warm White or 4-pin RGB colour garden lights, remember that these systems are not compatible with each other. It's easy to modify and expand your lighting design once you've chosen your colour scheme.

Using your plan as a guide select the fixtures best suited

to your garden layout.

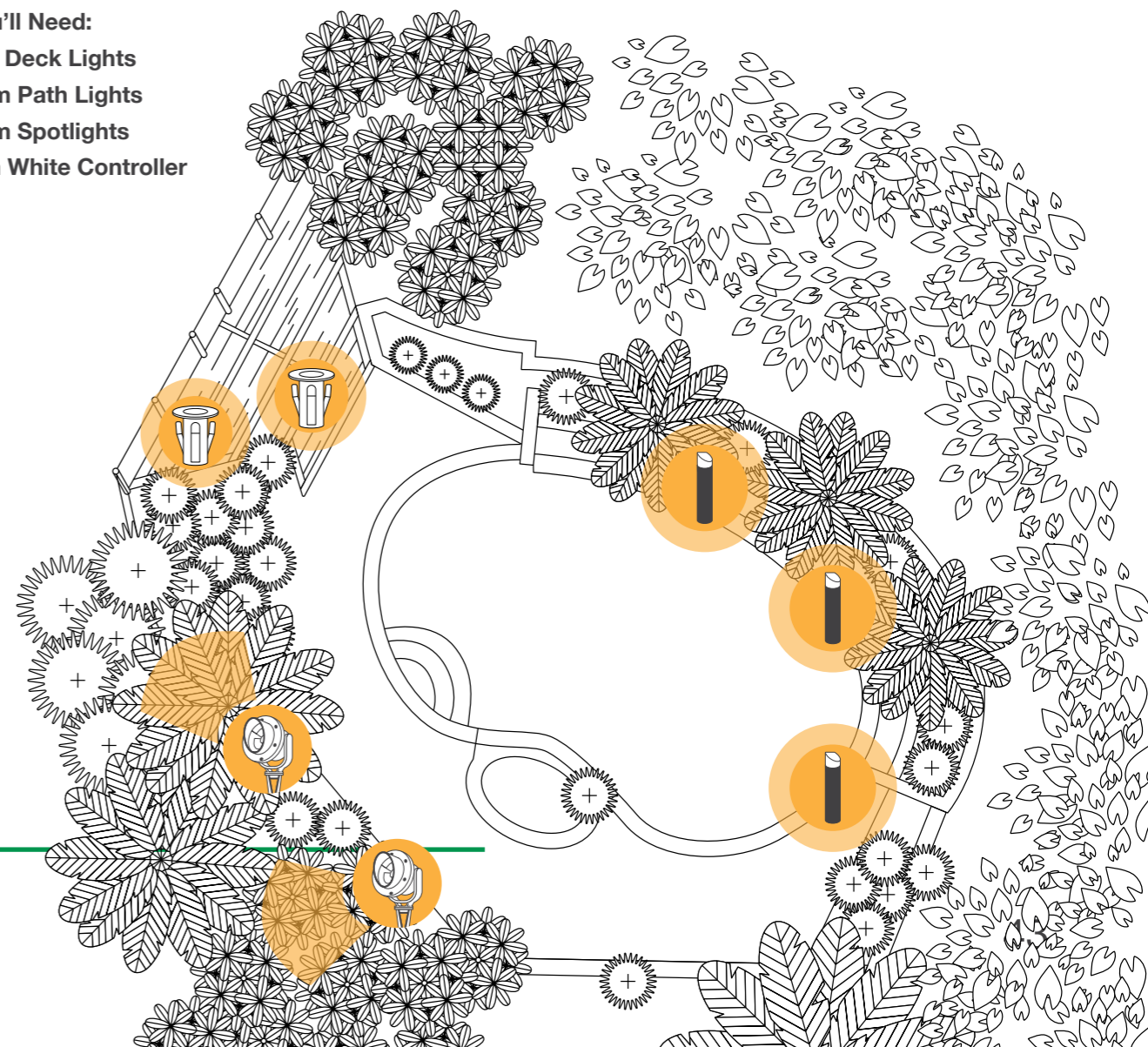
Work out the total wattage of the lights included in your plan prior to installation.

Lightsource controllers have a maximum capacity of 60 watts. If your design exceeds the 60-watt limit you will need another controller.

## TIP

Go out into your garden and measure how far apart your lights should be, make a note of these in your scaled plan. Your plan will determine the installation accessories required – cabling, connection tees, conduit for hiding cables.

**What You'll Need:**  
3x 45mm Deck Lights  
3x 250mm Path Lights  
2x 100mm Spotlights  
1x Warm White Controller







## TIP

Cable selection is very important to ensuring your system operates efficiently.

100mm Garden Light

## 3.

### CHOOSE YOUR LIGHTSOURCE CONTROLLER AND A SUITABLE INSTALLATION POINT AROUND THE HOME

You'll require a Warm White or RGB Lightsource Controller depending on the chosen colour scheme. Before mounting your controller, consider how the cable is going to run from the controller to the garden. Try to keep the mainline cable as short as possible to ensure optimum brightness of the lights. Ideally, your controller should not be exposed to rain or areas prone

to flooding or heavy water. Remember the controller should have a higher wattage than the total wattage of your garden lights. For more comprehensive lighting installations, you may require multiple transformers.

- If you don't already have an external power point you'll require a registered electrician to install one.

- For ease of operation, we recommend eye level placement.
- Up to four controllers can be operated through the Holman iGardener app.

## 4.

### WORK OUT THE AMOUNT OF CABLING REQUIRED TO CONNECT ALL YOUR LIGHTS TO THE LIGHTSOURCE CONTROLLER(S)

First ensure your cables are compatible with your controller, remembering Warm White colour schemes operate using 2-pin cables and RGB using the 4-pin system. Measure the

length of mainline cable from the controller to where your first light will go, and then the distance between each light.



## 5. TIME TO INSTALL YOUR LIGHTS!

Holman Path Lights and Spotlights have a simple garden spike and connection tee for easy placement into garden beds and lawn. Deck lights require a drill for

installation and panels may need to be removed to hide cables. Follow the simple instructions on page 50 for how to install deck lights.

## 6. JOIN YOUR CABLES TOGETHER AND CONNECT TO THE LIGHTSOURCE CONTROLLER

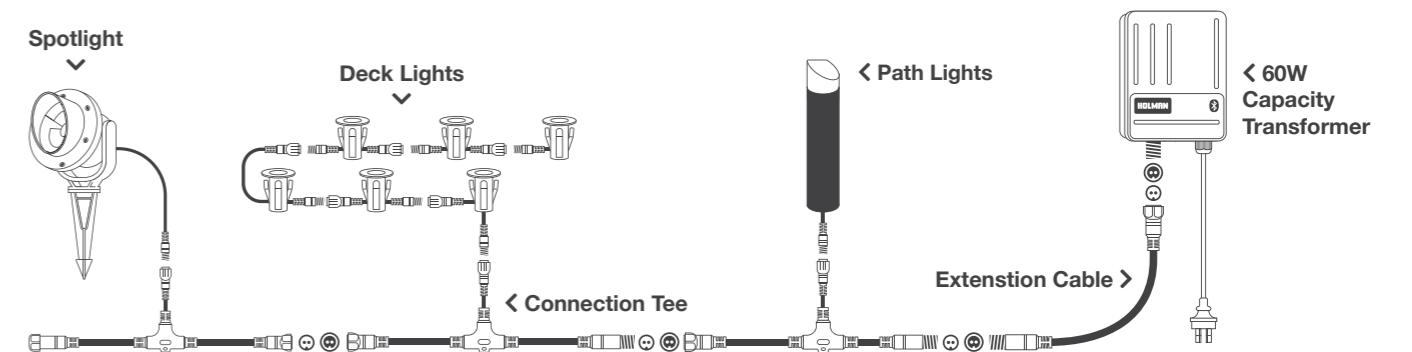
Ensure the Plug & Socket cable ends are butting up against each other and the caps are hand tightened only. An end cap is provided on each cable to weatherproof the last connector.

Use Connection Tees to expand the system in two directions. Hide your cables under mulch, soil or pavers. You may need to purchase electrical conduit from your local hardware store to hide or tidy excess cable.

## 7. FINAL SETUP AND INSTALLATION

Once your lights are connected and working we recommend testing your system at night to accurately assess your design. Be prepared to move the lights around and experiment with different techniques within

the limits of cable length. The Holman Garden Light system can be easily modified and extended at any time, so you can add extra light fixtures until it's perfect!



4-Pin Connection Tee  
ALCRGB3TL



100mm Garden Spotlight  
SLRGB10010



# INSTALLING DECK LIGHTS

## 1. MARK OUT WHERE YOUR LIGHTS WILL BE DRILLED INTO YOUR DECK

This will determine how many lights you require, and the length of cable needed to connect them to the controller. Our deck lights are automatically spaced out to up to 2m apart, but you can use a connection tee and mainline cable to extend the distance if necessary. Consider where your power supply is located and the length of mainline cable you'll need when deciding where the lights will go.

## 2. DRILL HOLES FOR YOUR LIGHTS

Ensure there are no cables or pipes behind the panels before you start drilling into your deck. Choose the drill spade that matches up the size of the deck light exactly (30mm or 45mm depending on your chosen fixture), the lights need to be secured tightly.

## 3. INSTALL YOUR DECK LIGHTS

Push the lights into the holes you've drilled making sure the fixture is secured tightly with no more than a couple of millimetres to move. Screw in the Plug + Socket cable together ensuring your caps are hand tightened to create a waterproof seal. We recommend no more than 12 deck lights be daisy chained together. If your plan includes more than 12, use lengths of mainline cable for a stronger connection.

## 4. CONNECT TO POWER

Once you've connected the lights together, run a length of mainline cable to your controller. Replace any boards you removed to hide the cable and you're ready to enjoy your lights. Tape off last loose cable, just as you would tape cables in irrigation. Do not connect to a spot light.





## VIDEO INSTALLATION GUIDE

---

We've created an additional video tutorial on how to install Holman Garden Lights. Point your smart phone's camera at the QR code for the video!





# PRODUCT & PRICING GUIDE

---

## WARM WHITE SYSTEM

CODE	PRODUCT	AUD	USD
CLBW60	LIGHTSOURCE Bluetooth Controller		
CLW60	LIGHTSOURCE Manual Controller		
ALCW1	1m Cable / 2 Pin		
ALCW2	2m Cable / 2 Pin		
ALCW5	5m Cable / 2 Pin		
ALCW10	10m Cable / 2 Pin		
ALCW3T	3 Way Expansion Tee / 2 Pin		
ALCW3TL	Connection Tee / 2 Pin		
DLWW18K	18mm Deck Light / 10 Pack / 0.6W		
DLW3006	30mm Deck Light / 6 Pack / 0.6W		
DLW4510	45mm Deck Lights / 6 Pack / 1W		
PSLW451	45mm Mini Spotlight / 0.5W		
SLW433	43mm Spotlight / 3W		
SLW757	75mm Spotlight / 7W		
SLW10010	100mm Spotlight / 10W		
SLW14015	140mm / 15W		
PLW2503	250mm Path Light / 3W		
PLW4503	450mm Path Light / 3W		
PLW5503	550mm Path Lights / 3W		

## RGB COLOUR SYSTEM

CODE	PRODUCT	AUD	USD
CLXRGB60	LIGHTSOURCE Wi-Fi Controller		
CLRGB60	LIGHTSOURCE Bluetooth Controller		
ALCRGB1	1m Cable / 4 Pin		
ALCRGB2	2m Cable / 4 Pin		
ALCRGB5	5m Cable / 4 Pin		
ALCRGB10	10m Cable / 4 Pin		
ALCRGB3T	3 Way Expansion Tee / 4 Pin		
ALCRGB3TL	Connection Tee / 4 Pin		
DLRGB3003	30mm Deck Light / 6 Pack / 0.6W		
DLRGB4505	45mm Deck Lights / 6 Pack / 1W		
PLSRGB4505	45mm Mini Spotlight / 0.5W		
SLRGB433	43mm Spotlight / 3W		
SLRGB756	75mm Spotlight / 7W		
SLRGB10010	100mm Spotlight / 10W		
PLRGB2503	250mm Path Light / 3W		

---



# HOLMAN

For the #SMARTGARDENER   

11 Walters Drive  
Osborne Park 6017  
Western Australia

[www.holmanindustries.com.au](http://www.holmanindustries.com.au)